



millboard®

Live. Life. Outside.

How to work out **your cladding requirements**

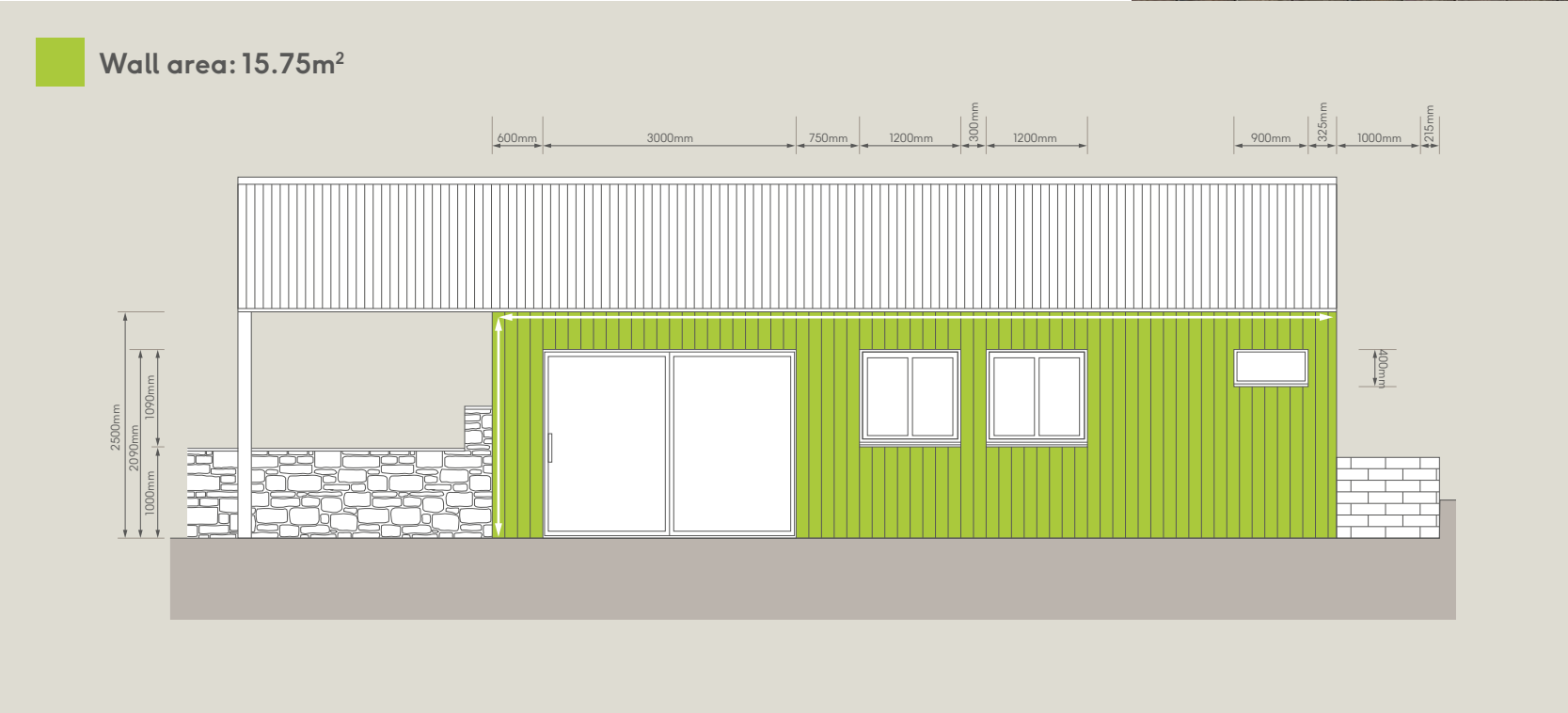


Important guidance

If a PDF drawing can't be provided for a take-off, please complete the form on page 8 of this document and include all of the following information...

1. The area (m²) | Total wall area to be clad*

Example calculation:

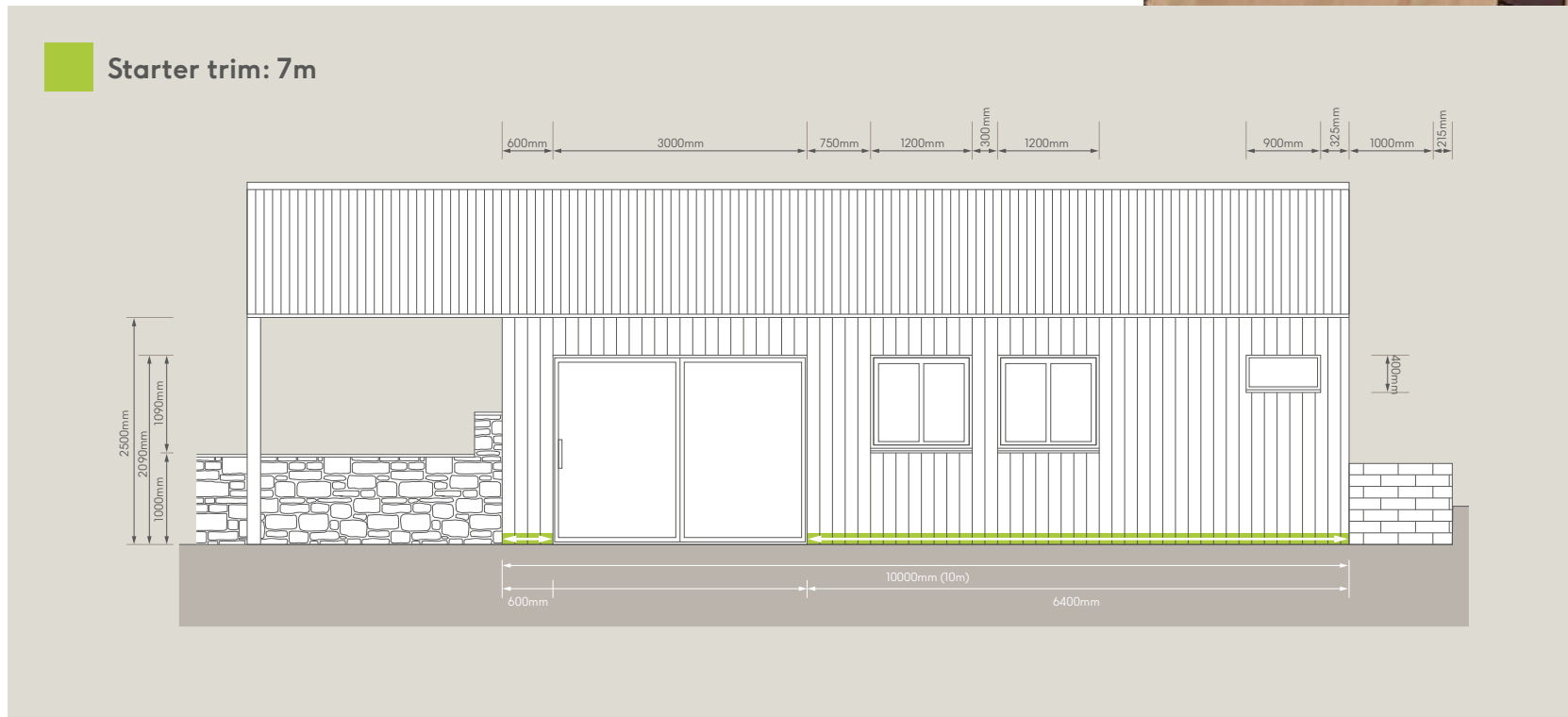


*Minus the area of the doors and windows.



2. Starter trim (linear metres) | Required along the bottom of the cladding only*

Example calculation:



*Shown by the thick green lines in the example above.



3. Perforated closure (linear metres) | Required as shown below*

- The bottom of the cladding
- Along the roof line where the cladding meets the soffit
- The top and bottom of the windows
- Top of the doors (bottom of doors is only required if the cladding runs under the door)

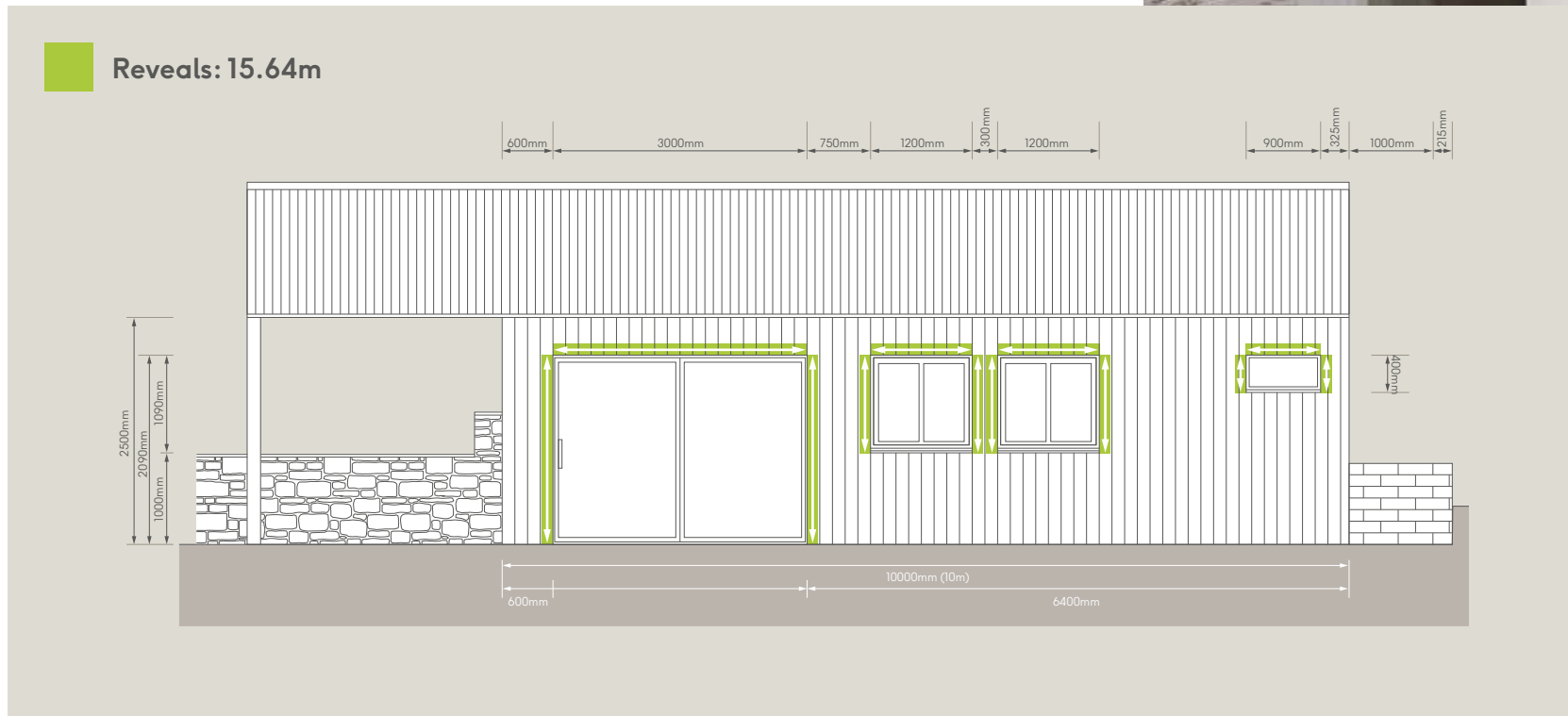
Example calculation:



*Shown by the thick green lines in the example above.

4. Reveals around the windows and doors | Required as shown below*

Example calculation:



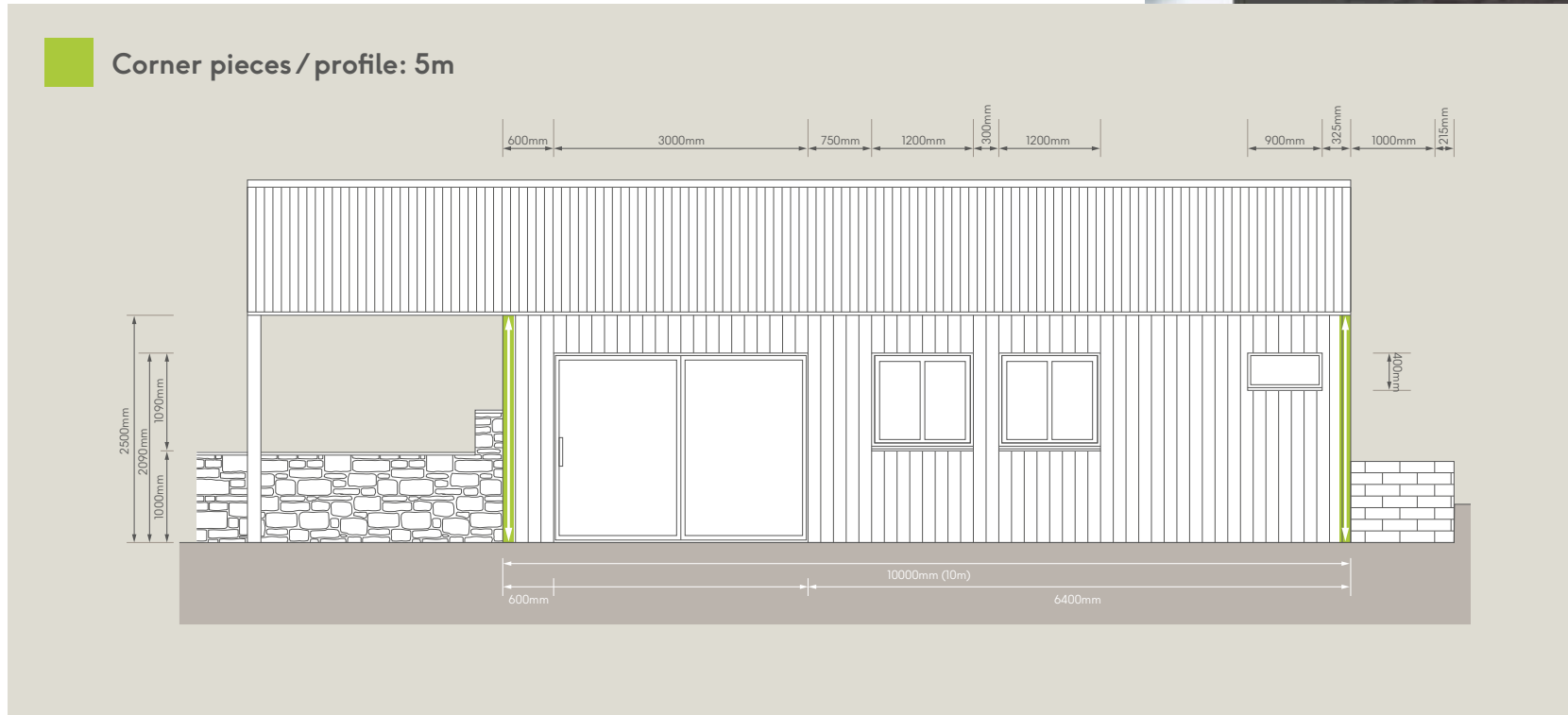
*Shown by the thick green lines in the example above.

5. Number of full-length corner pieces, or linear meterage of corner profile | Required as shown below*

To get two corners out of one piece we would need the total length of both pieces to be less than 3m, obviously if the corner is more than 3m a second piece will be required, please bear in mind that a good installer will keep the joint below or above eye level.

Corner trims will also be required where cladding comes up against an alternative finish on the same wall such as render.

Example calculation:



*Shown by the thick green lines in the example above.



Cladding requirements | Submission form

Please email this information to enquiries@millboard.co.uk for a bill of quantities/material list.

Customer reference:

Date: (DD/MM/YYYY)

Board type: (Mark box with an 'X' to confirm selection)

Envello Shadow Line⁺ (Fire rated) Envello Shadow Line

Envello Board & Batten

Colour: (Mark box with an 'X' to confirm selection)

Smoked Oak Golden Oak

Burnt Cedar

Antique Oak

Limed Oak (Shadow Line⁺ only)

Board installation direction: (Mark box with an 'X' to confirm selection)

Horizontal

Vertical

To complete this form please add your measurements to the boxes below:

1. Total wall area to be clad - metres². (For help on how to calculate see pg 3)

2. Starter trim - linear metres. (For help on how to calculate see pg 4)

3. Perforated closure- linear metres. (For help on how to calculate see pg 5)

4. Reveals around the windows and doors - linear metres. (For help on how to calculate see pg 6)

5. Number of external full length corner pieces or linear meterage of corner profile. (For help on how to calculate see pg 7)

6. Number of internal full length corner pieces or linear meterage of corner profile. (For help on how to calculate see pg 7)

Wastage:

7. Cladding - metres²

8. Reveals - linear metres

9. External corners - linear metres

10. Internal corners - linear metres

